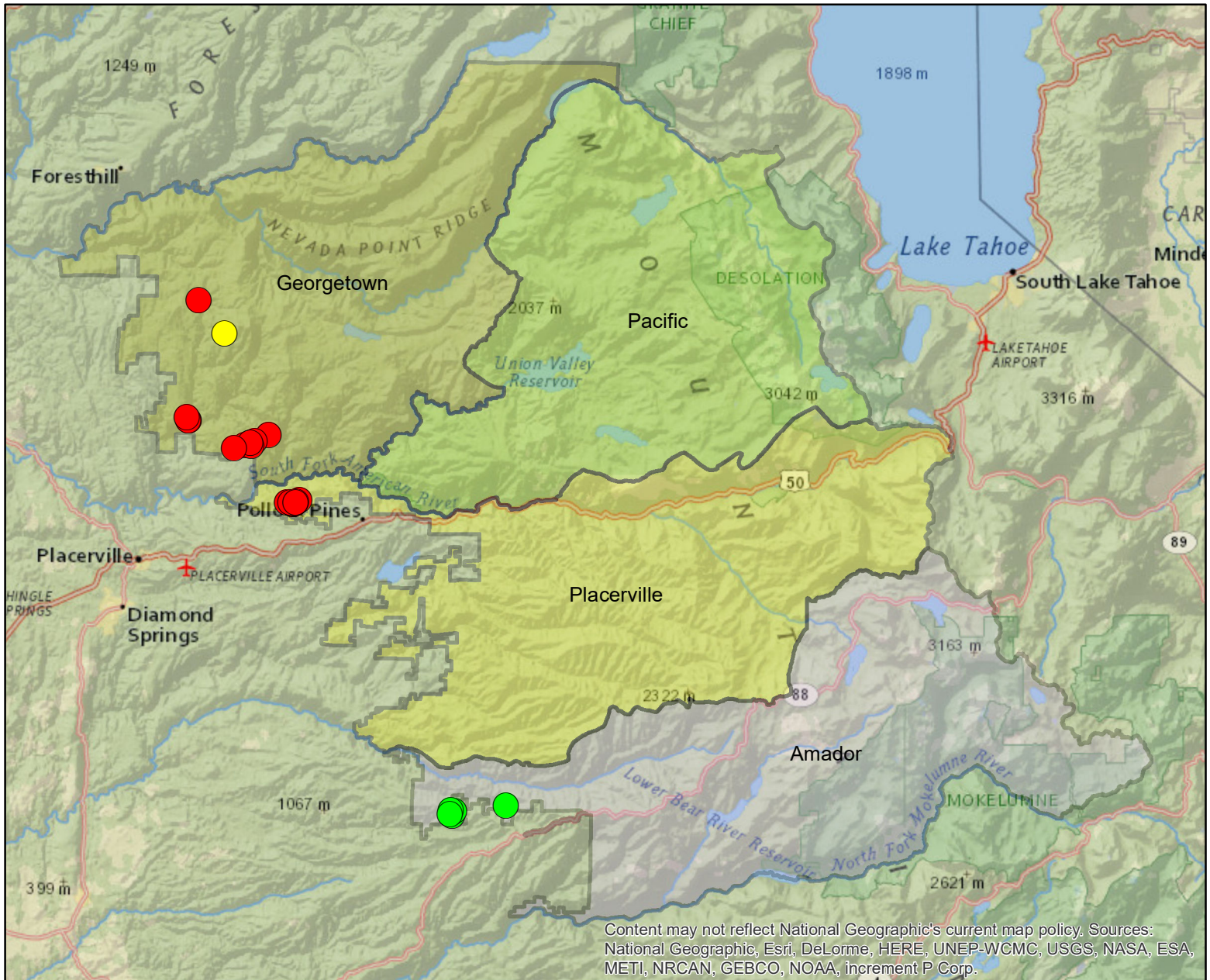


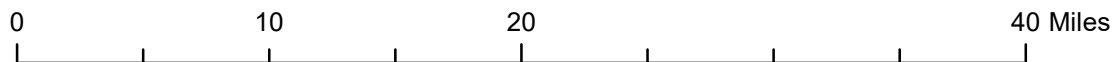
March  
2017







# Center for Sierra Nevada Conservation: Watershed Restoration






Content may not reflect National Geographic's current map policy. Sources: National Geographic, Esri, DeLorme, HERE, UNEP-WCMC, USGS, NASA, ESA, METI, NRCAN, GEBCO, NOAA, increment P Corp.



## ENF District

-  Georgetown
-  Pacific
-  Placerville
-  Amador

-  Restored
-  Evaluated
-  Monitored

Acres Directly Restored: 1.271  
Acres Indirectly Restored: 0.767  
Miles Directly Restored: 1.258

**In March of 2017 CSNC's restoration crew identified and evaluated 4 sites, restored 17 sites, and monitored 5 sites on the Eldorado National Forest**