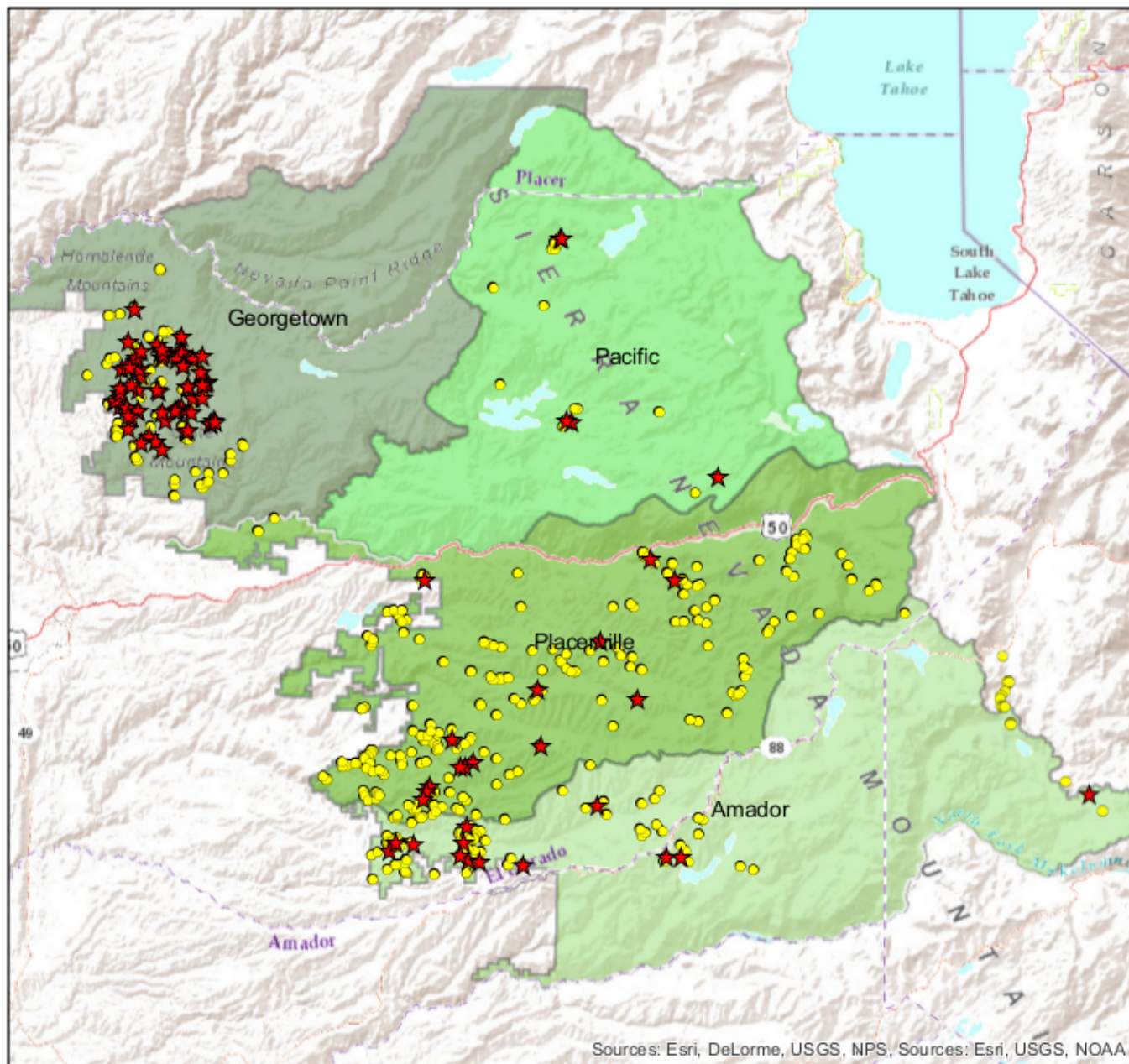


11/10/2014
- 10/1/2015



Center for Sierra Nevada Conservation: Watershed Restoration



Sources: Esri, DeLorme, USGS, NPS, Sources: Esri, USGS, NOAA



Forest District

- Amador
- Georgetown
- Pacific
- Placerville

- ★ Restored
- Evaluated



Between November 10th of 2014 and October 1st of 2015 CSNC's restoration crew discovered and evaluated 489 user created routes. Of the 489 sites discovered and evaluated CSNC completed restoration on 110 sites.